



**Government of India  
Ministry of Earth Sciences  
India Meteorological Department**



**Press Release**

**Date: 15<sup>th</sup> June, 2025**

**Time of Issue: 1350 hours IST**

**Subject: (i) Conditions are favourable for further advancement of Southwest monsoon over some parts of Gujarat, some more parts of Vidarbha, Chhattisgarh & Odisha during next 24 hours; over some parts of West Bengal, Jharkhand, Bihar and East Uttar Pradesh during subsequent 3 days.**  
**(ii) Monsoon likely to be in active phase with heavy to very heavy rainfall at a few places and extremely heavy falls (>20 cm) at isolated places over south peninsular India and Konkan & Goa till 16<sup>th</sup> June, 2025.**

**Southwest Monsoon: (Annexure I):**

- ❖ The Northern Limit of Monsoon continues to pass through 17.0°N/55°E, 17.5°N/60°E, 18°N/65°E, 18.5°N/70°E, Mumbai, Ahilyanagar, Adilabad, Bhawanipatna, Puri, Sandhead Island, 23.5°N/89.5°E, Balurghat, 30°N/85°E.
- ❖ Conditions are favourable for further advancement of Southwest monsoon over some parts of Gujarat, some more parts of Vidarbha, Chhattisgarh & Odisha during next 24 hours; over some parts of West Bengal, Jharkhand, Bihar and East Uttar Pradesh during subsequent 3 days.

**Realised weather during past 24 hours till 0830 hours IST of today, the 14<sup>th</sup> June, 2025 (Annexure II):**

- ❖ **Heat wave conditions** prevailed at isolated places over West Rajasthan, northeast Rajasthan, East Uttar Pradesh.
- ❖ **Hailstorm** occurred at isolated places over West Madhya Pradesh and Delhi.
- ❖ **Heavy to very heavy rainfall with Extremely heavy rainfall** has been recorded at isolated places over Sub-Himalayan West Bengal, Konkan & Goa, Coastal Karnataka,
- ❖ **Heavy to very heavy rainfall** has been recorded at isolated places over Bihar, Tamil Nadu, Kerala & Mahe, South Interior Karnataka, Nagaland, Manipur, Mizoram & Tripura; **Heavy rainfall** at isolated places over Assam & Meghalaya, Andaman & Nicobar Islands, Gangetic West Bengal, Odisha, West Uttar Pradesh, East Rajasthan, Madhya Pradesh, Vidarbha, Madhya Maharashtra, Gujrat State, North Interior Karnataka, Telangana,
- ❖ **Thunderstorm accompanied with Squally/Gusty** winds with speed 60-105 kmph at isolated places over Delhi, Punjab, Haryana, Madhya Pradesh, Gujarat Region, Andaman & Nicobar Islands; with speed 30-59 kmph at isolated places over Bihar, Vidarbha, Saurashtra & Kutch, Chhattisgarh, Tamil Nadu, Karnataka, Kerala, Telangana, Madhya Maharashtra, Uttar Pradesh, Marathwada, Odisha, Himachal Pradesh, Konkan & Goa, Jammu-Kashmir, West Rajasthan, Uttarakhand, Jharkhand, West Bengal & Sikkim, Assam & Meghalaya, Arunachal Pradesh.

**For more details of realised weather, kindly refer [Annexure II](#),**

Detailed observations of Maximum Temperature during past 24 hours till 0830 hours IST of today are appended in [Annexure III](#).

**i. Weather Systems, Forecast and Warnings (refer to Annexure IV & V):**

- ❖ An **upper air cyclonic circulation** lies over Northwest Bay of Bengal & neighbourhood between 3.1 & 7.6 km above mean sea level tilting Southwestwards with height.
- ❖ An **upper air cyclonic circulation** lies over South Madhya Maharashtra & neighbourhood in upper tropospheric levels tilting southwestwards with height.
- ❖ A **trough** runs from East Madhya Pradesh to Bangladesh in lower tropospheric levels tilting Southwestwards with height.

- ❖ An **upper air cyclonic circulation** lies over Central Assam & neighbourhood in lower & middle tropospheric levels.
- ❖ An **upper air cyclonic circulation** lies over North Rajasthan in lower tropospheric levels and a **trough** runs from this upper air cyclonic circulation to West Madhya Pradesh in lower tropospheric levels.
- ❖ An upper air cyclonic circulation lies over south Himachal Pradesh & adjoining north Uttarakhand and another over East Uttar Pradesh in lower tropospheric levels.
- ❖ The Western Disturbance as a trough in middle tropospheric westerlies in lower & middle tropospheric levels roughly along Long. 70°E to the north of Lat. 26°N persists.
- ❖ Under the influence of these systems, the following weather is likely:

#### South Peninsular India:

- ✓ Light/moderate rainfall at many/some places accompanied with isolated **thunderstorm, lightning & gusty winds speed reaching 40-50 kmph** over Tamil Nadu, Puducherry & Karaikal on 15<sup>th</sup> & 16<sup>th</sup> and Telangana during 15<sup>th</sup>-19<sup>th</sup> June.
- ✓ Isolated **heavy rainfall** likely over Tamil Nadu, Puducherry & Karaikal on 17<sup>th</sup>, Kerala & Mahe on 18<sup>th</sup> & 19<sup>th</sup>, Lakshadweep, Telangana on 15<sup>th</sup>, Coastal Andhra Pradesh & Yanam on 15<sup>th</sup> & 16<sup>th</sup>, Karnataka during 16<sup>th</sup>-18<sup>th</sup> with **very heavy rainfall** likely at isolated places over Tamil Nadu, Puducherry & Karaikal on 16<sup>th</sup>. Kerala & Mahe, Karnataka during 15<sup>th</sup>-17<sup>th</sup> with **Extremely heavy rainfall (>20 cm/24 hours) likely at isolated places over Tamil Nadu, Puducherry & Karaikal, Kerala & Mahe on 15<sup>th</sup>, Coastal Karnataka on 15<sup>th</sup> & 16<sup>th</sup> June.**
- ✓ **Strong surface winds** (speed reaching 40-60 kmph) very likely over Kerala & Mahe, Lakshadweep during 15<sup>th</sup>-17<sup>th</sup>, Rayalaseema and Coastal Andhra Pradesh & Yanam during 15<sup>th</sup>-19<sup>th</sup> June.

#### West India:

- ✓ Light/moderate rainfall at most/many places accompanied with **thunderstorm, lightning & gusty winds speed reaching 30-40 kmph** likely over Gujarat State during 15<sup>th</sup> -17<sup>th</sup> June.
- ✓ Isolated **heavy rainfall** likely over Konkan & Goa, Madhya Maharashtra, Saurashtra & Kutch during 18<sup>th</sup>-21<sup>st</sup>; Gujarat Region on 18<sup>th</sup> & 19<sup>th</sup> June with **very heavy rainfall** at isolated places over Konkan & Goa during 15<sup>th</sup>-18<sup>th</sup>, Madhya Maharashtra, Saurashtra & Kutch during 15<sup>th</sup>-17<sup>th</sup>; Gujarat Region on 15<sup>th</sup> & 16<sup>th</sup> June with **Extremely heavy rainfall (>20 cm/24 hours) likely at isolated places over Konkan & Goa on 15<sup>th</sup> & 16<sup>th</sup> June.**

#### East & Central India:

- ✓ Light/moderate rainfall at most/many places accompanied with **thunderstorm, lightning & gusty winds speed reaching 40-50 kmph** likely over Andaman & Nicobar Islands, Sub-Himalayan West Bengal & Sikkim on 15<sup>th</sup>, Madhya Pradesh, Vidarbha, Chhattisgarh during 15<sup>th</sup>-19<sup>th</sup>; Gangetic West Bengal, Bihar, Jharkhand, Odisha during 15<sup>th</sup>-20<sup>th</sup> during June with **Thundersquall (wind speed reaching 50-60 kmph gusting to 70 kmph)** very likely at isolated places over Jharkhand on 15<sup>th</sup>, West Madhya Pradesh on 15<sup>th</sup> & 16<sup>th</sup>, East Madhya Pradesh during 16<sup>th</sup>-19<sup>th</sup>, Chhattisgarh, Bihar on 15<sup>th</sup> & 16<sup>th</sup> June.
- ✓ Isolated **heavy rainfall** also likely over West Madhya Pradesh on 15<sup>th</sup>, 20<sup>th</sup> & 21<sup>st</sup>, East Madhya Pradesh, Chhattisgarh, Vidarbha, Sub-Himalayan West Bengal & Sikkim during 16<sup>th</sup>-20<sup>th</sup>, Gangetic West Bengal, Bihar, during 15<sup>th</sup>-21<sup>st</sup> and Jharkhand, Odisha during 16<sup>th</sup>-20<sup>th</sup> June with **very heavy rainfall** over Sub-Himalayan West Bengal & Sikkim on 15<sup>th</sup>, Chhattisgarh, Gangetic West Bengal on 17<sup>th</sup>, Jharkhand, Odisha on 17<sup>th</sup> & 18<sup>th</sup> and over Bihar on 18<sup>th</sup> & 19<sup>th</sup>, East Madhya Pradesh on 19<sup>th</sup> & 20<sup>th</sup>, June.

#### Northwest India:

- ✓ Light/moderate rainfall at some/isolated places accompanied with **thunderstorm, lightning & gusty winds speed reaching 40-50 kmph** likely over Northwest India during 15<sup>th</sup>-21<sup>st</sup> June with **Thundersquall (wind speed reaching 50-60 kmph gusting to 70 kmph)** over Uttarakhand, Punjab, Haryana on 15<sup>th</sup> and during Rajasthan during 15<sup>th</sup>-17<sup>th</sup> June.
- ✓ Isolated **heavy rainfall** likely over Uttarakhand on 15<sup>th</sup>; Haryana on 15<sup>th</sup> & 21<sup>st</sup>, West Uttar Pradesh on 15<sup>th</sup> and during 18<sup>th</sup>-21<sup>st</sup>, East Rajasthan on 15<sup>th</sup> & 16<sup>th</sup>, 20<sup>th</sup> & 21<sup>st</sup>, East Uttar Pradesh during 18<sup>th</sup>-21<sup>st</sup>, West Rajasthan on 16<sup>th</sup>, Himachal Pradesh on 20<sup>th</sup> & 21<sup>st</sup>, June with **very heavy rainfall** on Uttarakhand during 16<sup>th</sup>-21<sup>st</sup> June.
- ✓ **Dust storm (wind speed reaching 50-60 kmph gusting to 70 kmph)** very likely at isolated places over West Rajasthan on 15<sup>th</sup> June.
- ✓ **Hailstorm** also very likely at isolated places over north Haryana on 15<sup>th</sup> June.

#### Northeast India:

- ✓ Light/moderate rainfall at many/most places accompanied with **thunderstorm, lightning & gusty winds speed reaching 30-50 kmph** likely to continue over Northeast India during next 7 days with **isolated heavy rainfall** over Arunachal Pradesh, Assam & Meghalaya on 15<sup>th</sup> & 16<sup>th</sup> June with **very heavy rainfall** over Assam & Meghalaya during 16<sup>th</sup>-21<sup>st</sup>, Arunachal Pradesh during 17<sup>th</sup>-21<sup>st</sup> Nagaland, Manipur, Mizoram & Tripura during next 7 days.

#### Maximum Temperature Forecast:

- ❖ Maximum Temperatures likely to fall by 3-5°C over Northwest India during next 24 hours and no significant change thereafter.
- ❖ No significant change in maximum temperatures likely over Central India during next 24 hours and gradual fall by 2-4°C thereafter during subsequent 5 days.
- ❖ Maximum Temperatures likely to fall by 3-4°C over Northwest India during next 3 days and no significant change thereafter.
- ❖ No significant change in maximum temperatures likely over rest parts of the country.

#### Heat wave, Hot & Humid weather and Warm Night warnings:

- ❖ **Hot & humid weather** is likely to prevail over East Uttar Pradesh and Bihar today on 15<sup>th</sup> June.

#### Fishermen Warnings:

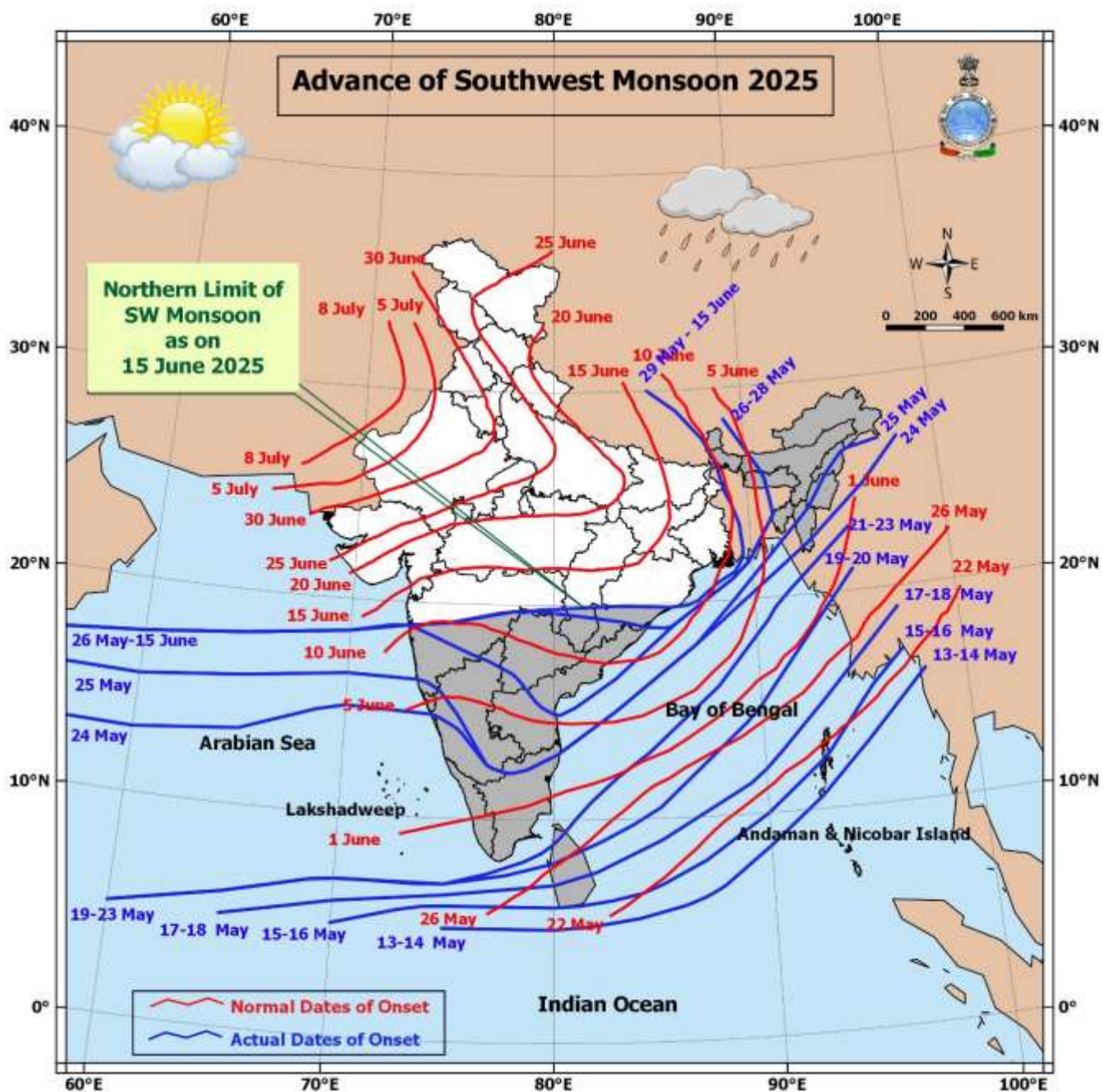
- ❖ Fishermen are advised to avoid venturing into the following from 15<sup>th</sup> to 20<sup>th</sup> June 2025: Arabian Sea & Adjacent Coasts: Along and off Somalia coast, Oman & adjoining Yemen coasts, Comorin area, Konkan, Goa, Karnataka, Kerala coasts Lakshadweep, Maldives, southeast & eastcentral Arabian Sea South Gujarat coast (15<sup>th</sup> June); entire Gujarat coast (16<sup>th</sup>-20<sup>th</sup> June) Most of southwest & westcentral Arabian Sea (15<sup>th</sup>-20<sup>th</sup> June) Some parts of northeast Arabian Sea (15<sup>th</sup> June); many parts (16<sup>th</sup>-20<sup>th</sup> June) Bay of Bengal & Adjacent Coasts: Many parts of southwest & some parts of southeast Bay of Bengal, central Bay of Bengal, Gulf of Mannar, Andaman Sea (15<sup>th</sup>-20<sup>th</sup> June) Along and off Tamil Nadu & Andhra Pradesh coasts (15<sup>th</sup>-18<sup>th</sup> June); north Andhra Pradesh coast (18<sup>th</sup>-20<sup>th</sup> June) Along and off Sri Lanka coast (15<sup>th</sup>-18<sup>th</sup> June) Along and off Odisha, West Bengal coasts & northwest Bay of Bengal (17<sup>th</sup>-20<sup>th</sup> June)
- ❖ Total suspension of fishing operations is advised over these areas during the specified dates.

#### ii. Weather conditions and forecast over Delhi/NCR during 15<sup>th</sup> June to 18<sup>th</sup> June, 2025 (Annexure VI)

For more details, kindly refer National Weather Bulletin:

[https://mausam.imd.gov.in/responsive/all\\_india\\_forecast\\_bulletin.php](https://mausam.imd.gov.in/responsive/all_india_forecast_bulletin.php)

For District wise warnings refer: <https://mausam.imd.gov.in/responsive/districtWiseWarningGIS.php>





**Significant weather reported during past 24 hours till 0830 hours IST of today:****Rainfall recorded (in cm) reported during past 24 hours till 0830 hours IST of today, the 15<sup>th</sup> June:**

- ❖ **Konkan & Goa:** Mandangad (dist Ratnagiri) 25; Wakwali ARG (dist Ratnagiri) 20; Savarde-arg (dist Ratnagiri) 19; Mangaon (dist Raigad) 17; Sanguem (dist South Goa) 15; Shriwardhan (dist Raigad), Pawarwadi - ARG (dist Ratnagiri), Mhasla (dist Raigad) 14 Each; Sudhagad Pali (dist Raigad), Poladpur (dist Raigad), Lanja (dist Ratnagiri) 13 Each; Dapoli ARG (dist Ratnagiri) 12; Ratnagiri (dist Ratnagiri), Panjim (dist North Goa) 11 Each;
- ❖ **Sub Himalayan West Bengal & Sikkim:** Gurjonghora Tea Estate (dist Jalpaiguri), Washabari Tea Estate (dist Jalpaiguri) 21 Each; Fagu Tea Estate (dist Jalpaiguri) 19; Baintgoorie T.e. (dist Jalpaiguri), Soongachi T.e. (dist Jalpaiguri) 18 Each; Neora (dist Jalpaiguri), Damdim Tea Estate (dist Jalpaiguri) 17 Each; Aibheel Tea Estate (dist Jalpaiguri), Chel (dist Jalpaiguri), Good Hope Tea Estate (dist Jalpaiguri), Kumlai T.e. (dist Jalpaiguri), Oodlabari Tea Estate (dist Jalpaiguri) 14 Each; Ghish (dist Jalpaiguri), Mogulkata Tea Estate (dist Jalpaiguri), Nagarkata (dist Jalpaiguri) 12 Each; Sevoke (dist Darjeeling) 11;
- ❖ **Coastal Karnataka:** Panambur (dist Dakshina Kannada) 20; Mangaluru (dist Dakshina Kannada) 17; Bantwal (dist Dakshina Kannada) 14; Mangaluru AP (dist Dakshina Kannada), Belthangadi (dist Dakshina Kannada) 13 Each; Mudubidre (dist Dakshina Kannada) 12; Mani (dist Dakshina Kannada), Castle Rock (dist Uttara Kannada), Uppinangadi (dist Dakshina Kannada), Manki (dist Uttara Kannada) 11 Each;
- ❖ **Kerala & Mahe:** Hosdurg (dist Kasargod), Kudulu (dist Kasargod) 15 Each; Vadakara (dist Kozhikode) 14; Panathur AWS (dist Kasargod) 13; Ponnani (dist Malappuram), Kodungallur (dist Thrissur), Alwaye PWD (dist Ernakulam) 12 Each; Chalakudi (dist Thrissur), Aluva AWS (dist Ernakulam), Munakkal AWS (dist Thrissur) 11 Each; Enamakkal (dist Thrissur), Kochi C.i.a.l. (dist Ernakulam), Perumpavur (dist Ernakulam), Kannur Icar AWS (dist Cannur), Peringome AWS (dist Cannur), Muliya AWS (dist Kasargod), Lower Sholayar AWS (dist Thrissur) 10 Each;
- ❖ **South Interior Karnataka:** Kottigehara (dist Chikkamagaluru) 15; Bhagamandala (dist Kodagu) 13;
- ❖ **Tamil Nadu, Puducherry & Karaikal:** Avalanche (dist Nilgiris) 14; Chinnakalar (dist Coimbatore) 13; Upasi Tea Research AWS (dist Coimbatore) 9; Valparai PTO (dist Coimbatore), Cincona (dist Coimbatore), Worth Estate Cher (dist Nilgiris), Taluk Office Pandalur (dist Nilgiris) 8 Each; Devala (dist Nilgiris), Sholayar (dist Coimbatore), Upper Bhavani (dist Nilgiris), Valparai Pap (dist Coimbatore) 7 Each;
- ❖ **Bihar:** Pothia (dist Kishanganj) 13;
- ❖ **Assam & Meghalaya:** Amraghat (dist Cachar) 11; Silchar (dist Cachar) 7;
- ❖ **Saurashtra & Kutch:** Gondal (dist Rajkot) 10; Rajkot (dist Rajkot), Dasada (dist Surendranagar) 7 Each;
- ❖ **Telangana:** Venkatapur (dist Mulugu) 9; Kagaznagar (dist Kumaram Bheem) 7;
- ❖ **East Madhya Pradesh:** Umreth (dist Chindwara) 8; Garhakota (dist Sagar), Banda (dist Sagar) 7 Each;
- ❖ **Gujarat Region:** Khambhat (dist Anand) 8;
- ❖ **West Uttar Pradesh:** Gunnaur (dist Sambhal) 8;
- ❖ **Gangetic West Bengal:** Sagar Island PTO (dist South 24 Parganas) 8;
- ❖ **Nagaland, Manipur, Mizoram & Tripura:** Lengpui (dist Aizawl) 8; Saiha (dist Saiha), Kolasib ARG (dist Kolasib) 7 Each;
- ❖ **Andaman & Nicobar Islands:** Maya Bandar (dist North & Middle Andaman) 7; Madhya Maharashtra: Shahuwadi (dist Kolhapur), Gaganbawada (dist Kolhapur) 7 Each;
- ❖ **East Rajasthan:** Sagwara (dist Dungarpur) 7;
- ❖ **Odisha:** Daspalla (dist Nayagarh) 7;
- ❖ **West Madhya Pradesh:** Khandwa (dist Khandwa) 7.

**Realised Gusty Winds (kmph) During Past 24hours ending at 0830 hrs IST of today the 15<sup>th</sup> June:**

- ❖ **West Madhya Pradesh:** Agar 83 Kmph;
- ❖ **Gujarat Region:** Dahod Aws 81 Kmph;
- ❖ **Andaman & Nicobar Islands:** Sri Vijayapuram (63);
- ❖ **East Madhya Pradesh:** Sagar Jabalpur 61 Kmph;
- ❖ **Bihar:** Rajgir (56); East Champaran, Arrabari, Saraiya (35); Sukhet (33); Pusa (31); Bhojpur (30);
- ❖ **Vidarbha:** Buldhana 56 Kmph;
- ❖ **Saurashtra & Kutch:** Rajkot- Targhadia Aws 56 Kmph;
- ❖ **Chhattisgarh:** Kanker 54 Kmph;
- ❖ **Tamil Nadu:** Kovilpatti\_Amfu (54 Kmph), Tenkasi (54 Kmph) Mahabalipuram (50 Kmph) & Vedsandur (50 Kmph), Coimbatore\_Amfu (48 Kmph), Natham\_Isro (46 Kmph), Thiruchendur (46 Kmph), Tiruppur\_Collector\_Office (46 Kmph), Erode\_Isro (46 Kmph),
- ❖ **Madhya Maharashtra:** Jalgaon-50;
- ❖ **Assam & Meghalaya:** Chirang=50, Gauhati\_University=48, Sivsagar\_Aegcl=48, Guwahati=44, Kokraghar=43, Chandubi=43, Vcbc\_Rani=39, Mushalpur=37, Nalbari\_Kvk=33, Kukurmara\_Mirza\_Aegcl=31
- ❖ **West Uttar Pradesh:** Bulandshahar-50, Bareilly(Aws)-46, Jalaun(Aws)-44, Farrukhabad((Aws)-43, Mainpuri(Aws)-41, Agra(Aws)-39
- ❖ **East Uttar Pradesh:** Chitrakoot(Aws)-50, Prayagraj(Aws)-39, Raebareilly(Aws)-39, Kushinagar(Ap)-37, & Prayagraj-37
- ❖ **Marathawada:** Jalna-46;
- ❖ **Arunachal Pradesh:** Seppa=46, Seppa\_Pampoli=43, Kalaktang=41, Raga=31
- ❖ **Odisha:** Gunupur (44); Bhubaneswar (31); Mayurbhanj (30);
- ❖ **Himachal Pradesh:** Bajaura-43, Seobagh-37
- ❖ **Konkan & Goa:** Karjat(Raigad)-43;
- ❖ **Jammu Kashmir:** Ramban=37, Kupwara\_Kvk=35, Baramulla\_Kvk=28
- ❖ **West Rajasthan:** Bikaner=35 Kmph, Ganganagar=40kmph;
- ❖ **Uttarakhand:** Pantnagar\_Amfu-35, Kapkote-35, Mukteshwar-31
- ❖ **Jharkhand:** Bokaro (33)
- ❖ **Gangetic West Bengal:** Gangasagar (31); Digha (30)
- ❖ **Sub-Himalayan West Bengal & Sikkim:** Jalpaiguri (31); Mal (30)

### Temperature observations during past 24 hours till 0830 hours IST of today:

- ❖ Yesterday, **Maximum temperatures** were in the **range of 42-46°C** at many places over East Uttar Pradesh; a few places over North Rajasthan, Punjab, Haryana, West Uttar Pradesh, Bihar, north Madhya Pradesh. They were in the **range of 38-42 °C** over many places of remaining parts of Punjab, Bihar, West Uttar Pradesh, remaining Rajasthan, remaining Madhya Pradesh; at isolated places over Chhattisgarh, Gujarat state, Vidarbha, West Bengal, Odisha; in the **range of 33-37°C** over most places over Coastal Andhra Pradesh & Yanam; at isolated places over North Madhya Maharashtra, north Marathwada, Telangana, Rayalaseema, Tamil Nadu, Puducherry & Karaikal and below 33 °C elsewhere in the remaining part of the country. Yesterday, **The highest maximum temperature of 46.5°C was reported at CHURU (RAJASTHAN).**
- ❖ **Maximum Temperatures were markedly above normal (> 5.1°C)** at few places over Assam & Meghalaya; at isolated places over Sub Himalayan West Bengal & Sikkim, East Uttar Pradesh, West Uttar Pradesh, Himachal Pradesh, West Madhya Pradesh and East Madhya Pradesh. **appreciably above normal (3.1°C to 5.0°C)** at many places over Punjab; at most places over Bihar; at few places over Nagaland, Manipur, Mizoram & Tripura, Haryana Chandigarh -Delhi and West Rajasthan; at isolated places over Gangetic West Bengal, Odisha, Jammu Kashmir Ladakh-Gilgit-Baltistan-Muzaffarabad, East Rajasthan, Gujarat Region, Saurashtra & Kutch and Vidarbha. **above normal (1.6°C to 3.0°C)** at many places over Uttarakhand; at most places over Arunachal Pradesh; at isolated places over Chhattisgarh and Tamil Nadu, Puducherry & Karaikal. **Near normal (-1.5°C to 1.5°C)** at many places over Konkan & Goa and Madhya Maharashtra; at most places over Jharkhand, Coastal Karnataka and Lakshadweep; at few places over Andaman & Nicobar Islands, Coastal Andhra Pradesh & Yanam, Telangana, Rayalaseema and Kerala & Mahe; at isolated places over North Interior Karnataka and South Interior Karnataka.

Fig.1: Maximum Temperatures

Fig.2: Departure of Maximum Temperatures

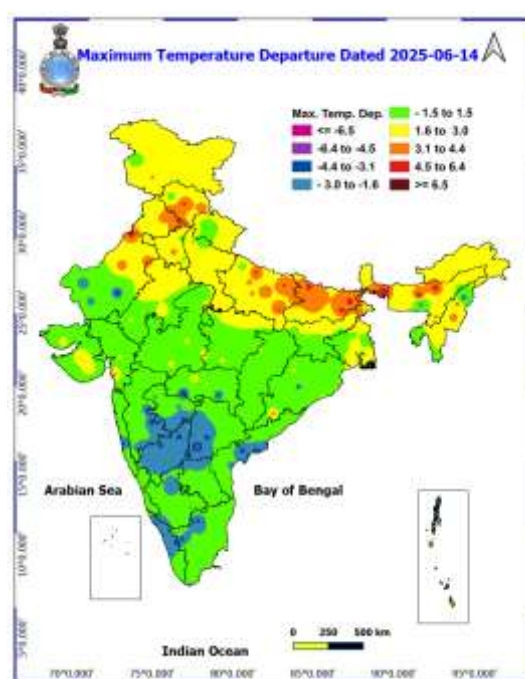
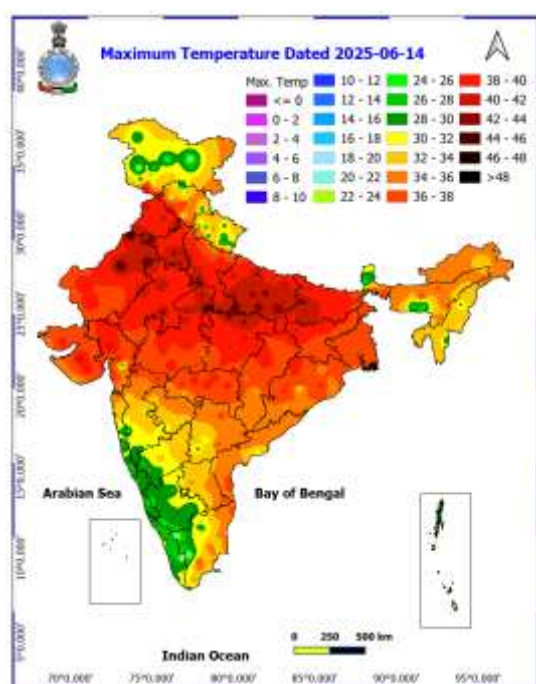
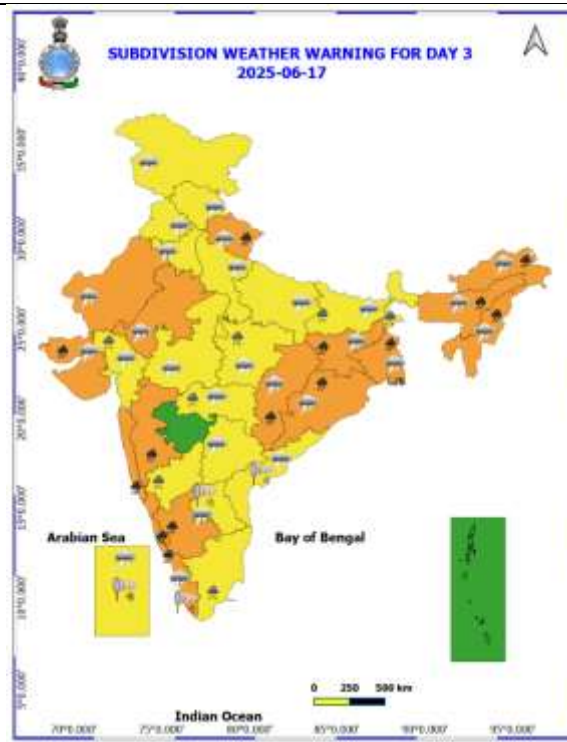
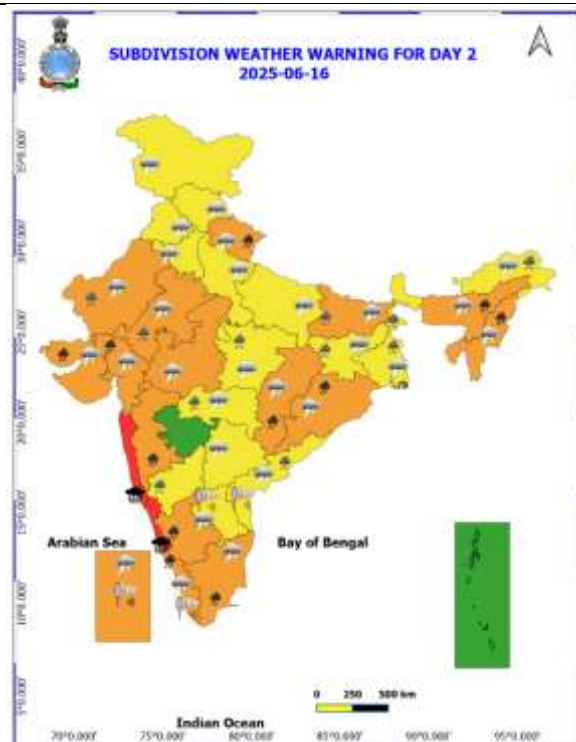
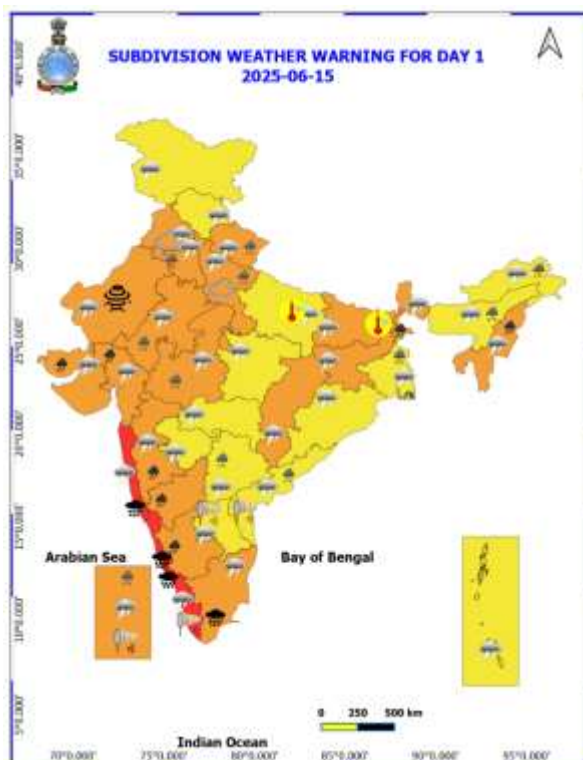
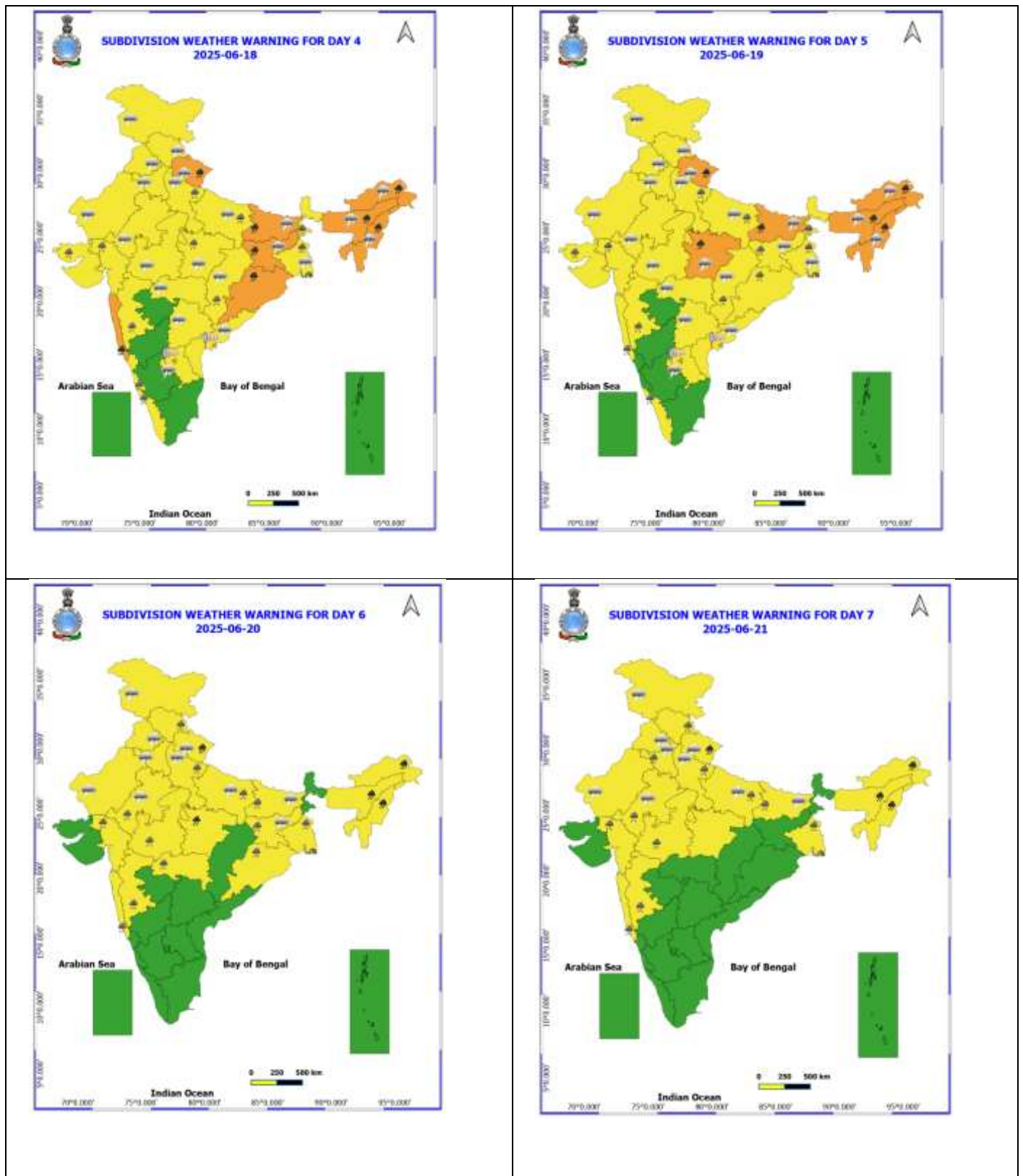


Table-1								
7 Days Rainfall Forecast								
S.No.	Subdivision	15- Jun	16- Jun	17- Jun	18- Jun	19- Jun	20- Jun	21- Jun
		Day 1	Day 2	Day 3	Day 4	Day 5	Day 6	Day 7
1	ANDAMAN & NICOBAR ISLANDS	FWS	FWS	WS	WS	WS	WS	WS
2	ARUNACHAL PRADESH	FWS	FWS	WS	WS	WS	WS	FWS
3	ASSAM & MEHGHALAYA	FWS	WS	WS	WS	WS	WS	WS
4	NAGALAND, MANIPUR, MIZORAM AND TRIPURA	FWS	WS	WS	WS	WS	WS	WS
5	SUB HIMALAYAN WEST BENGAL & SIKKIM	WS	WS	FWS	FWS	FWS	FWS	FWS
6	GANGETIC WEST BENGAL	FWS	WS	WS	WS	WS	WS	WS
7	ODISHA	FWS	WS	WS	FWS	FWS	SCT	SCT
8	JHARKHAND	FWS	FWS	WS	WS	WS	WS	FWS
9	BIHAR	SCT	SCT	FWS	FWS	FWS	WS	WS
10	EAST UTTAR PRADESH	ISOL	SCT	FWS	FWS	WS	WS	FWS
11	WEST UTTAR PRADESH	SCT	SCT	SCT	SCT	FWS	WS	FWS
12	UTTARAKHAND	FWS	WS	WS	WS	WS	WS	WS
13	HARYANA, CHANDIGARH & DELHI	SCT	SCT	ISOL	SCT	FWS	FWS	FWS
14	PUNJAB	ISOL	SCT	ISOL	ISOL	SCT	SCT	SCT
15	HIMACHAL PRADESH	SCT	SCT	SCT	SCT	SCT	FWS	FWS
16	JAMMU AND KASHMIR AND LADAKH	SCT	SCT	ISOL	ISOL	ISOL	ISOL	ISOL
17	WEST RAJASTHAN	SCT	SCT	ISOL	ISOL	ISOL	ISOL	ISOL
18	EAST RAJASTHAN	SCT	SCT	ISOL	ISOL	ISOL	SCT	FWS
19	WEST MADHYA PRADESH	FWS	FWS	FWS	FWS	WS	WS	WS
20	EAST MADHYA PRADESH	FWS	WS	WS	WS	WS	WS	FWS
21	GUJRAT REGION	WS	WS	FWS	FWS	SCT	FWS	FWS
22	SAURASHTRA & KUTCH	WS	WS	WS	FWS	FWS	SCT	DRY
23	KONKAN & GOA	WS	WS	WS	WS	WS	WS	WS
24	MADHYA MAHARASHTRA	SCT	SCT	SCT	ISOL	ISOL	ISOL	ISOL
25	MARATHWADA	ISOL	ISOL	ISOL	ISOL	ISOL	ISOL	ISOL
26	VIDARBHA	ISOL	SCT	FWS	FWS	FWS	WS	WS
27	CHHATTISGARH	SCT	FWS	FWS	FWS	FWS	FWS	SCT
28	COASTAL ANDHRA PRADESH	SCT	SCT	SCT	ISOL	ISOL	ISOL	ISOL
29	TELANGANA	FWS	SCT	ISOL	ISOL	ISOL	ISOL	ISOL
30	RAYALASEEMA	SCT	ISOL	ISOL	ISOL	ISOL	ISOL	ISOL
31	TAMILNADU & PUDUCHERRY	SCT	SCT	SCT	ISOL	ISOL	ISOL	ISOL
32	COSTAL KARNATAKA	WS	WS	WS	WS	WS	WS	SCT
33	NORTH INTERIOR KARNATAKA	WS	WS	FWS	FWS	SCT	SCT	SCT
34	SOUTH INTERIOR KARNATAKA	WS	WS	FWS	FWS	SCT	SCT	SCT
35	KERALA AND MAHE	WS	WS	WS	WS	WS	FWS	FWS
36	LAKSHADWEEP	WS	WS	WS	WS	FWS	FWS	FWS

- As the lead period increases forecast accuracy decreases.







- Action may be taken based on ORANGE AND REDCOLOUR warnings.
- Vulnerable regions likely urban and hilly areas action may be initiated for heavy rainfall warning.
- As the lead period increases forecast accuracy decreases.

Detailed districtwise Multi Hazard weather warning for next five days available at <https://mausam.imd.gov.in/responsive/districtWiseWarningGIS.php>

**Weather forecast over Delhi/NCR during 15<sup>th</sup> to 18<sup>th</sup> June 2025****Past Weather:**

There has been a fall in the minimum temperature up to 6 - 9°C and rise in the maximum temperature up to 1 - 2°C over Delhi/NCR during the past 24 hours. The maximum and minimum temperatures over Delhi were around 41 to 42°C and 20 to 24° respectively. The minimum temperature was below normal up to 2 - 8°C and the maximum temperature was above normal up to 1 - 2°C. Partly cloudy sky conditions with predominant surface wind from the east/southeast direction with wind speeds up to 18 kmph gusty to 104 kmph prevailed during the past 24 hours. Moderate rainfall with hailstorm has been recorded in many parts of Delhi. Partly cloudy sky conditions with wind speed less than 12 kmph from the southeast direction prevailed over the region in the forenoon today.

**Weather Forecast:**

**15.06.2025:** Partly cloudy sky. Light to moderate rain/thunderstorm/lighting accompanied with gusty winds 50 - 60 kmph temporary reaching 70 kmph during thunderstorm towards evening/night. The maximum temperatures over Delhi are likely to be in the range of 37 to 39°C. The maximum temperature will be below normal up to 1 - 2°C. The predominant surface wind will likely be from the southeast direction with a wind speed of less than 20 kmph in the afternoon. The wind speed will gradually increase becoming 20-25 kmph from the southeast direction during evening and night.

**16.06.2025:** Generally cloudy sky. Light to moderate rain/thunderstorm/lighting with gusty winds 40 - 50 kmph temporary reaching 60 kmph during thunderstorm. The maximum and minimum temperatures over Delhi are likely to be in the range of 36 to 38°C and 23 to 25°C respectively. The minimum temperature will be below normal up to 2 - 4°C and the maximum temperature will be below normal up to 1 - 2°C. The predominant surface wind will likely be from the southeast direction with a wind speed of less than 20 kmph during the morning hours. The wind speed will gradually increase becoming 20-25 kmph from the southeast direction in the afternoon. It will decrease becoming less than 20 kmph from the northeast direction during evening and night.

**17.06.2025:** Partly cloudy sky. Light to moderate rain/thunderstorm/lighting accompanied with gusty winds 40 - 50 kmph temporary reaching 60 kmph during thunderstorm. The maximum and minimum temperatures over Delhi are likely to be in the range of 35 to 37°C and 22 to 24°C respectively. The minimum temperature will be below normal up to 3 - 5°C and the maximum temperature will be below normal up to 1 - 3°C. The predominant surface wind will likely be from the east direction with a wind speed of less than 15 kmph during the morning hours. The wind speed will gradually increase becoming less than 20 kmph from the southeast direction in the afternoon. It will increase to less than 25 kmph from the south direction during the evening and night.

**18.06.2025:** Partly cloudy sky. Light to moderate rain/thunderstorm/lighting accompanied with gusty winds 40 - 50 kmph temporary reaching 60 kmph during thunderstorm. The maximum and minimum temperatures over Delhi are likely to be in the range of 36 to 38°C and 22 to 24°C respectively. The minimum temperature will be below normal up to 3 - 5°C and the maximum temperature will be below normal up to 1 - 2°C. The predominant surface wind will likely be from the northwest direction with a wind speed of less than 20 kmph during the morning hours. The wind speed will gradually increase becoming less than 25 kmph from the northwest direction in the afternoon. It will decrease to less than 20 kmph from the northwest direction during the evening and night.

**Impact expected and Action Suggested due to thunderstorm with lightning/gusty winds:**

- Be cautious and take precautionary measures, though there is the likelihood of thunderstorm/lighting and gusty winds (speed 40 – 50 kmph) temporarily reaching to 60 kmph during thunderstorm with dust rising surface winds.
- Breaking of tree branches, uprooting of large avenue trees, Large dead limbs blown from trees, Damage to standing crops, Minor to major damage to power and communication lines due to breaking of branches, Partial damage to vulnerable structures due to strong winds, Loose objects may fly.
- People are advised to keep a watch on the weather for worsening conditions and be ready to move to safer places accordingly, stay indoors, close windows & doors and avoid travel if possible, take safe shelters; do not take shelter under trees, do not lie on concrete floors and do not lean against concrete walls, unplug electrical/ electronic appliances, immediately get out of water bodies, keep away from all the objects that conduct electricity.

**Impact & Action Suggested due to extremely heavy falls/ very heavy rainfall:**

- ✓ **Extremely heavy rainfall (>20 cm/24 hours) likely at isolated places over Tamil Nadu, Puducherry & Karaikal, Kerala & Mahe on 15<sup>th</sup>, Coastal Karnataka, Konkan & Goa on 15<sup>th</sup> & 16<sup>th</sup> June.**
- ✓ **Very heavy rainfall** on Sub-Himalayan West Bengal & Sikkim on 15<sup>th</sup>, Tamil Nadu, Puducherry & Karaikal on 16<sup>th</sup>, Kerala & Mahe, Karnataka, Madhya Maharashtra, Saurashtra & Kutch during 15<sup>th</sup>-17<sup>th</sup> Konkan & Goa during 15<sup>th</sup>-18<sup>th</sup>, Gujarat Region on 15<sup>th</sup> & 16<sup>th</sup> June, Chhattisgarh, Gangetic West Bengal on 17<sup>th</sup>, Jharkhand, Odisha on 17<sup>th</sup> & 18<sup>th</sup> and over Bihar on 18<sup>th</sup> & 19<sup>th</sup>, East Madhya Pradesh on 19<sup>th</sup> & 20<sup>th</sup>, Uttarakhand, Assam & Meghalaya during 16<sup>th</sup>-21<sup>st</sup> Arunachal Pradesh during 17<sup>th</sup>-21<sup>st</sup>, Nagaland, Manipur, Mizoram & Tripura during next 7 days

**Impact Expected**

- Localized Flooding of roads, water logging in low lying areas and closure of underpasses mainly in urban areas of the above region.
- Occasional reduction in visibility due to heavy rainfall.
- Disruption of traffic in major cities due to water logging in roads leading to increased travel time.
- Minor damage to kutcha roads.
- Possibilities of damage to vulnerable structure.
- Localized Landslides/Mudslides/landslips/mudslips/landsinks/mudsinks.
- Damage to horticulture and standing crops in some areas due to inundation.
- It may lead to riverine flooding in some river catchments (for riverine flooding please visit Web page of CWC)

**Action Suggested**

- Check for traffic congestion on your route before leaving for your destination.
- Follow any traffic advisories that are issued in this regard.
- Avoid going to areas that face the water logging problems often.
- Avoid staying in vulnerable structure.

**Impact expected and action suggested due to isolated thunderstorm with lightning/gusty & Squally winds over**

- ✓ **Thundersquall (wind speed reaching 50-60 kmph gusting to 70 kmph)** at isolated places over Uttarakhand, Punjab, Haryana, Jharkhand on 15<sup>th</sup> and during Rajasthan during 15<sup>th</sup>-17<sup>th</sup>, West Madhya Pradesh, Chhattisgarh, Bihar on 15<sup>th</sup> & 16<sup>th</sup>, East Madhya Pradesh during 16<sup>th</sup>-19<sup>th</sup> June.
- ✓ **Dust storm (wind speed reaching 50-60 kmph gusting to 70 kmph)** very likely at isolated places over West Rajasthan on 15<sup>th</sup> June.
- ✓ **Hailstorm also very likely at isolated places over north Haryana on 15<sup>th</sup> June.**
- ✓ **Strong surface winds** (speed reaching 40-60 kmph) over Kerala & Mahe, Lakshadweep during 15<sup>th</sup>-17<sup>th</sup>, Rayalaseema and Coastal Andhra Pradesh & Yanam during 15<sup>th</sup>-19<sup>th</sup> June.

**Impact expected:**

- Breaking of tree branches, uprooting of large avenue trees. Large dead limbs blown from trees. Damage to Standing crops.
- Minor to Major damage to banana and papaya trees.
- Minor to major damage to power and communication lines due to breaking of branches.
- Strong wind/hail may damage plantation, horticulture and standing crops.
- Partial damage to vulnerable structures due to strong winds.
- Minor damage to kutcha houses/walls and huts.
- Loose objects may fly.

**Action suggested:**

- People are advised to keep a watch on the weather for worsening conditions and be ready to move to safer places accordingly.
- Stay indoors, close windows & doors and avoid travel if possible.
- Take safe shelters; do not take shelter under trees.
- Do not lie on concrete floors and do not lean against concrete walls.
- Unplug electrical/ electronic appliances.
- Immediately get out of water bodies.
- Keep away from all the objects that conduct electricity.



## Agromet advisories for likely impact of Heavy / Heavy to Very Heavy / Extremely Heavy Rainfall

- In **Kerala**, ensure proper drainage facilities in rice nurseries, transplanted rice fields, coconut and banana plantations to prevent water logging. Postpone land preparation of main field for rice transplanting. Undertake propping in banana to protect the plants from heavy rains.
- In **Tamil Nadu**, postpone nursery sowing / transplanting of rice and sowing of sorghum and cumbu. Ensure proper drainage facilities in rice nurseries, cotton, sugarcane, groundnut and transplanted rice fields, coconut and banana plantations to prevent water logging. Provide staking or support to tender plants of cotton, young plants of sugarcane and fruit-bearing plants of banana to avoid lodging. Avoid de-topping and de-trashing in sugarcane during continuous rainfall.
- In **Coastal Karnataka**, postpone nursery sowing of rice. Ensure proper drainage facilities in rice nurseries, banana, coconut and arecanut plantations to prevent water logging. In **South Interior Karnataka**, postpone nursery sowing of rice and sowing of pigeon pea, maize and onion. Cover young seedlings of rice with plastic sheets or agro-shade nets to protect them from heavy rains. Provide adequate drainage to remove excess water from rice nurseries, coffee, cardamom, coconut and arecanut plantations to prevent water logging. Provide support to sugarcane and banana to prevent lodging. In **North Interior Karnataka**, postpone sowing of green gram, cotton, maize, groundnut, rice, pigeon pea, soybean and onion. Drain out excess water from the crops which are at seedling stage to prevent water logging.
- In **Konkan & Goa**, postpone nursery sowing of rice. In **Konkan & Goa** and *ghat areas of Madhya Maharashtra*, make arrangement to drain out excess water from rice nurseries to prevent water logging.
- In **Sub-Himalayan West Bengal**, maintain proper drainage channels in rice nurseries and fields of jute and ginger to avoid water stagnation. Avoid sowing of rice in low lands to avoid losses due to heavy rainfall.
- In **Bhabar and Tarai Zone of Uttarakhand**, harvest matured potato, vegetables (tomato, French beans etc.) and fruits (peach and plum). Postpone sowing of pigeon pea, millets and soybean and ensure proper drainage in already sown crops.
- In **Assam**, keep the harvested produce of sesame, foxtail millet, *Boro* rice, banana and citrus at safer places. Ensure proper drainage in *Sali* rice nursery, maize and sugarcane fields, arecanut and coconut plantations to prevent water logging.
- In **Meghalaya**, ensure proper drainage in the fields of maize, ginger, French bean, cowpea, vegetables and around rice nurseries to prevent water logging. Provide strong bamboo stakes or trellis support to cow pea, cucumber and bottle gourd to prevent vines from trailing on wet ground. Provide support to banana plant to prevent lodging.
- In **Mizoram**, ensure proper drainage facilities in maize and low land pre-*kharif* rice to avoid water stagnation. Undertake propping in five-month-old sugarcane crop to avoid lodging.
- In **Arunachal Pradesh**, carry out harvesting of soybean and vegetables such as chilli and okra and keep the produce at a safer place. Ensure proper drainage in rice nurseries, kiwi and apple orchards to avoid water logging.

### Livestock / Fishery

- Keep the animals inside the shed during heavy rainfall and provide them balanced feed.
- Store feed and fodder in a safe place to prevent spoilage.
- Construct an outlet with proper netting around the ponds to drain out excess water, thereby preventing fish from escaping in case of overflow.

## Agromet advisories for likely impact of Thunderstorm / Gusty Winds / Squally Winds

- Provide mechanical support to horticultural crops and staking or support to vegetables and young fruit plants / fruit-bearing plants to avoid lodging due to strong winds.

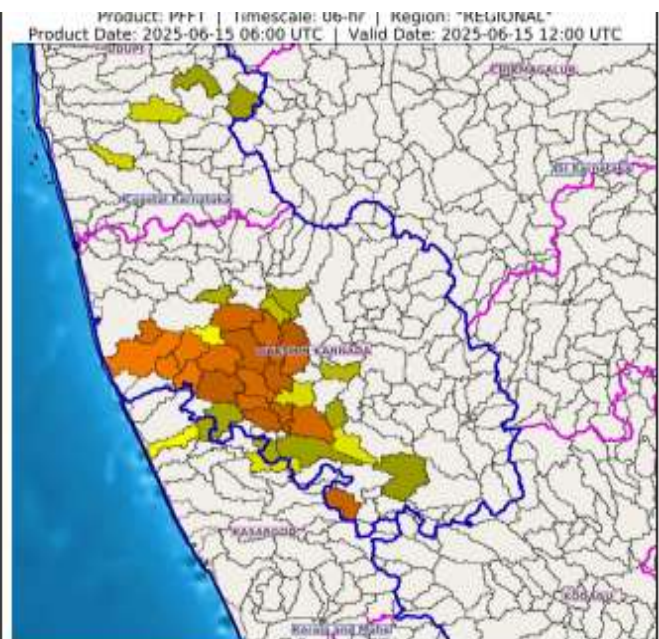
## Flash Flood Guidance:

### **Persistent Flash Flood Threat (PFFT) till 1730 IST of 15-06-2025 :**

**Moderate flash flood threat** likely over few watersheds & neighbourhoods of following Met Sub-divisions during next 6 hours.

**Coastal Karnataka** - Dakshin Kannada and Udupi districts.  
**Kerala & Mahe** - Kasargod district.

Surface runoff/ Inundation may occur at some fully saturated soils & low-lying areas over Area of Concern (AoC) as shown in map due to expected rainfall occurrence in next 6 hours.

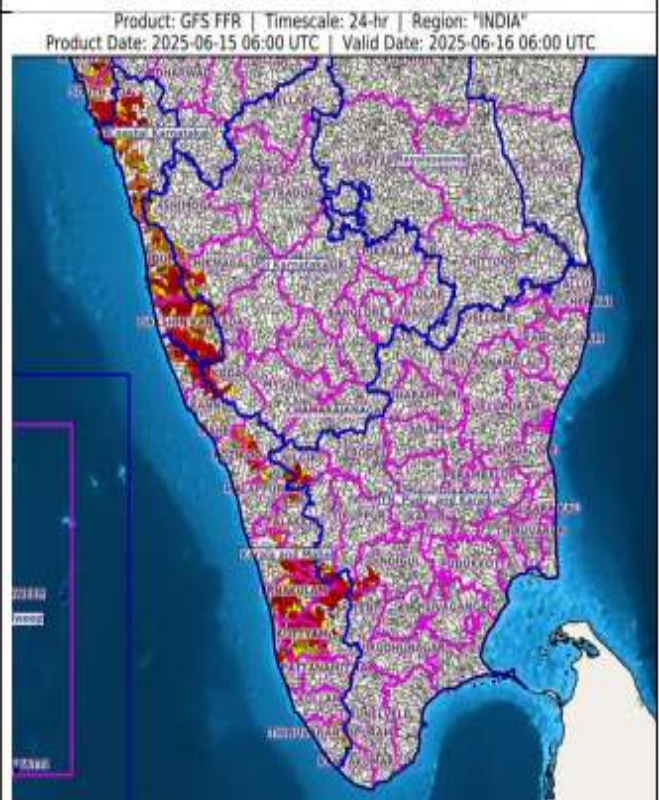


### **24 hours Outlook for the Flash Flood Risk (FFR) till 1130 IST of 16-06-2025 :**

**Moderate to High flash flood risk** likely over few watersheds & neighbourhoods of following Met Sub-divisions during next 24 hours.

**Coastal Karnataka** - Dakshin Kannada, Udupi and Uttar Kannada districts.  
**Kerala & Mahe** - Alappuzha, Ernakulam, Idukki, Kannur, Kasargod, Kottayam, Kozikod, Mahe, Malappuram, Palakkad, Pattanamittia, Thiruvananthapuram, Trishur and Wayanad districts.

Surface runoff/ Inundation may occur at some fully saturated soils & low-lying areas over Area of Concern (AoC) as shown in map due to expected rainfall occurrence in next 24 hours.

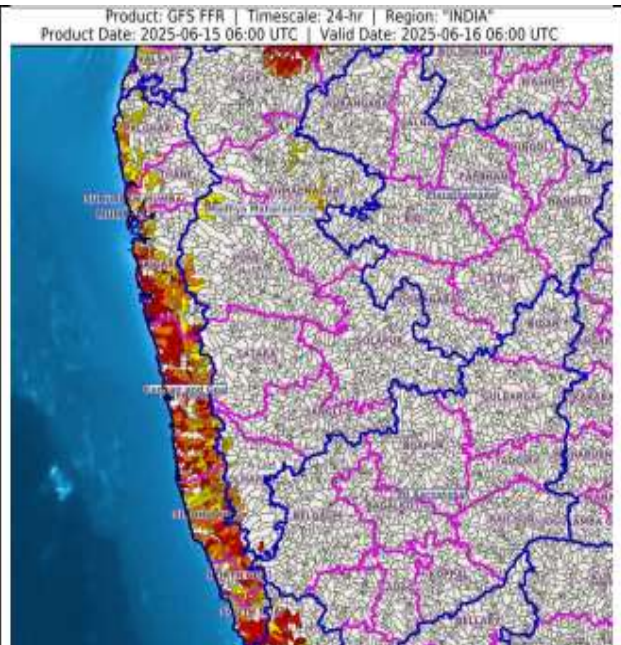




**24 hours Outlook for the Flash Flood Risk (FFR) till 1130 IST of 16-06-2025 :**

**Moderate to High flash flood risk** likely over few watersheds & neighbourhoods of following Met Sub-divisions during next 24 hours.  
**Konkan & Goa** - North Goa, South Goa, Mumbai City, Palghar, Raigarh, Ratnagiri, Sindhudurg, Suburban Mumbai and Thane districts.

Surface runoff/ Inundation may occur at some fully saturated soils & low-lying areas over Area of Concern (AoC) as shown in map due to expected rainfall occurrence in next 24 hours.



**24 hours Outlook for the Flash Flood Risk (FFR) till 1130 IST of 16-06-2025 :**

**Moderate to High flash flood risk** likely over few watersheds & neighbourhoods of following Met Sub-divisions during next 24 hours.

**Assam & Meghalaya** - Cachar, N.C Hills, East Khasi Hills, Ri Bhoi and Jaintia Hills districts.

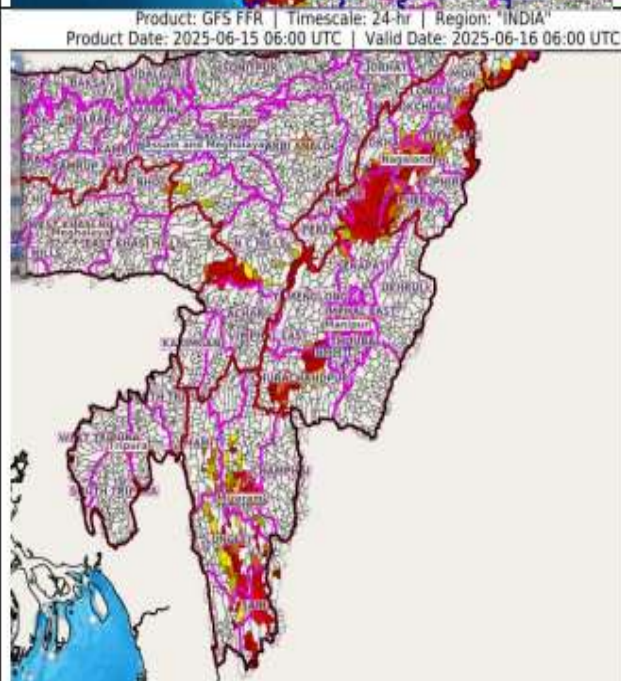
**Nagaland Mizoram Manipur Tripura (NMMT) –**

**Manipur-** Churachandpur, Senapati, Tamenglong,

**Mizoram-** Aizawl, Champhai, Kolasib, Lawngtlai, Lunglei, Mamit, Saiha, Serchhip,

**Nagaland-** Dimapur, Kiphire, Kohima, Longleng, Mokokchung, Mon, Peren, Phek, Tuensang, Wokha and Zunheboto districts.

Surface runoff/ Inundation may occur at some fully saturated soils & low-lying areas over Area of Concern (AoC) as shown in map due to expected rainfall occurrence in next 24 hours.



### Legends & abbreviations:

- ❖ **Heavy Rain:**64.5-115.5mm; **Very Heavy Rain:**115.6-204.4mm; **Extremely Heavy Rain:** >204.4mm.
- ❖ **Obsy:** Observatory; Automatic Weather Station; **ARG:** Automatic Rain Gauge; **dist:** District; **NH:** National Highway; **KVK:** Krishi Vigyan Kendra; **DVC:** Damodar Valley Corporation; **PTO:** Part Time Office, **Aero:** Aerodrome, **IAF:** Indian Air Force.
- ❖ **Region wise classification of meteorological Sub-Divisions:**
  - **Northwest India:** Western Himalayan Region (Jammu-Kashmir-Ladakh-Gilgit-Baltistan-Muzaffarabad, Himachal Pradesh and Uttarakhand); Punjab, Haryana-Chandigarh-Delhi; West Uttar Pradesh, East Uttar Pradesh, West Rajasthan and East Rajasthan.
  - **Central India:** West Madhya Pradesh, East Madhya Pradesh, Vidarbha and Chhattisgarh.
  - **East India:** Bihar, Jharkhand, Sub-Himalayan West Bengal & Sikkim; Gangetic West Bengal, Odisha and Andaman & Nicobar Islands.
  - **Northeast India:** Arunachal Pradesh, Assam & Meghalaya and Nagaland, Manipur, Mizoram & Tripura.
  - **West India:** Gujarat Region, Saurashtra & Kutch, Konkan & Goa, Madhya Maharashtra and Marathawada.
  - **South India:** Coastal Andhra Pradesh & Yanam, Telangana, Rayalaseema, Coastal Karnataka, North Interior Karnataka, South Interior Karnataka, Kerala & Mahe, Tamil Nadu, Puducherry & Karaikal and Lakshadweep.



## LEGENDS

1. अंडमान और निकोबार द्वीपसमूह

2. अरुणाचल प्रदेश

3. असम और मेघालय

4. नागालैंड, मणिपुर, मिजोरम और त्रिपुरा

5. उप-हिमालयी पश्चिम बंगाल और सिक्किम

6. गंगीय पश्चिम बंगाल

7. ओडिशा

8. झारखंड

9. बिहार

10. पूर्वी उत्तर प्रदेश

11. पश्चिम उत्तर प्रदेश

12. उत्तराखंड

13. हरियाणा, चंडीगढ़ और दिल्ली

14. पंजाब

15. हिमाचल प्रदेश

16. जम्मू और कश्मीर और लद्दाख

17. पश्चिम राजस्थान

18. पूर्वी राजस्थान

19. पश्चिम मध्य प्रदेश

20. पूर्वी मध्य प्रदेश

21. गुजरात

22. सौराष्ट्र

23. कोंकण और गोवा

24. मध्य महाराष्ट्र

25. मराठवाड़ा

26. विदर्भ

27. छत्तीसगढ़

28. तटीय आंध्र प्रदेश और यनम

29. तेलंगाना

30. रायलसीमा

31. तमिलनाडु, पुडुचेरी और कराईकल

32. तटीय कर्नाटक

33. आंतरिक उत्तरी कर्नाटक

34. आंतरिक दक्षिणी कर्नाटक

35. केरल और माहे

36. लक्षद्वीप



1. Andaman & Nicobar Islands

2. Arunachal Pradesh

3. Assam & Meghalaya

4. Nagaland, Manipur, Mizoram & Tripura

5. Sub-Himalayan West Bengal & Sikkim

6. Gangetic West Bengal

7. Odisha

8. Jharkhand

9. Bihar

10. East Uttar Pradesh

11. West Uttar Pradesh

12. Uttarakhand

13. Haryana, Chandigarh & Delhi

14. Punjab

15. Himachal Pradesh

16. Jammu & Kashmir and Ladakh

17. West Rajasthan

18. East Rajasthan

19. West Madhya Pradesh

20. East Madhya Pradesh

21. Gujarat

22. Saurashtra

23. Konkan & Goa

24. Madhya Maharashtra

25. Marathwada

26. Vidarbha

27. Chhattisgarh

28. Coastal Andhra Pradesh & Yanam

29. Telangana

30. Rayalaseema

31. Tamilnadu, Puducherry & Karaikal

32. Coastal Karnataka

33. North Interior Karnataka

34. South Interior Karnataka

35. Kerala & Mahe

36. Lakshadweep

## SPATIAL DISTRIBUTION (% of Stations reporting)

% Stations	Category	% Stations	Category
76-100	Widespread (WS/Most Places)	26-50	Scattered (SCT/A Few Places)
51-75	Fairly Widespread (FWS/Many Places)	1-25	Isolated (ISOL)



Fog



Heavy Snow



Cold Wave



Heavy Rain



Dust Storm



Cold Day



Very Heavy Rain



Heat Wave



Ground Frost



Extremely Heavy Rain



Warm Night



Thunder & Lightning



Hot Day



Hailstorm



Hot & Humid



Dust Raising Winds



Strong Surface Winds

### COLOUR CODED WARNING

No Warning (No Action)

Watch (Be Aware)

Alert (Be Prepared To Take Action)

Warning (Take Action)

### Probabilistic Forecast

Terms	Probability of Occurrence (%)
Unlikely	< 25
Likely	25 - 50
Very Likely	50 - 75
Most Likely	> 75

\* Red colour warning does not mean "Red Alert", Red colour warning means "Take Action".

Forecast and Warning for any day is valid from 0830 hours IST of day till 0830 hours IST of next day.

For more details, kindly visit <https://mausam.imd.gov.in> or contact: 011-2434-4599

(Service to the Nation since 1875)

### DEFINITION/CRITERIA

#### Rain/ Snow \*

Heavy: 64.5 to 115.5 mm/cm \*  
Very Heavy: 115.6 to 204.4 mm/cm \*  
Extremely Heavy: > 204.4 mm/cm \*

#### Heat Wave

When maximum temperature of a station reaches  $\geq 40^{\circ}\text{C}$  for plains and  $\geq 30^{\circ}\text{C}$  for hilly regions

(a) Based on Departure from normal

Heat Wave: Maximum Temperature Departure from normal  $4.5^{\circ}\text{C}$  to  $6.4^{\circ}\text{C}$ .

Severe Heat Wave: Maximum Temperature Departure from normal  $\geq 6.5^{\circ}\text{C}$

(b). Based on Actual maximum temperature

Heat Wave: When actual maximum temperature  $\geq 45^{\circ}\text{C}$ .

Severe Heat Wave: When actual maximum temperature  $\geq 47^{\circ}\text{C}$ .

(c). Criteria for heat wave for coastal stations

When maximum temperature departure is  $> 4.5^{\circ}\text{C}$  from normal. Heat Wave may be described provided maximum temperature  $\geq 37^{\circ}\text{C}$ .

#### Warm Night

When maximum temperature remains  $40^{\circ}\text{C}$

Warm Night: When minimum temperature departure  $4.5^{\circ}\text{C}$  to  $6.4^{\circ}\text{C}$ .

Severe Warm Night: When minimum temperature departure  $> 6.4^{\circ}\text{C}$ .

#### Cold Wave

When minimum temperature of a station  $\leq 10^{\circ}\text{C}$  for plains and  $\leq 0^{\circ}\text{C}$  for hilly regions.

(a). Based on departure

Cold Wave: Minimum Temperature Departure from normal  $-4.5^{\circ}\text{C}$  to  $-6.4^{\circ}\text{C}$ .

Severe Cold Wave: Minimum Temperature Departure from normal  $\leq -6.5^{\circ}\text{C}$

(b) Based on actual Minimum Temperature (for Plains only)

Cold Wave: When Minimum Temperature is  $\leq 4.0^{\circ}\text{C}$

Severe Cold Wave: When Minimum Temperature is  $\leq 2.0^{\circ}\text{C}$

(c) For Coastal Stations

When Minimum Temperature departure is  $\leq -4.5^{\circ}\text{C}$  & actual Minimum Temperature is  $\leq 15^{\circ}\text{C}$

#### Cold Day

When minimum temperature of a station  $\leq 10^{\circ}\text{C}$  for plains and  $\leq 0^{\circ}\text{C}$  for hilly regions

Based on departure

Cold Day: Maximum Temperature Departure from normal  $-4.5^{\circ}\text{C}$  to  $-6.4^{\circ}\text{C}$ .

Severe Cold Day: Maximum Temperature Departure from normal  $\leq -6.5^{\circ}\text{C}$

#### Fog

Phenomenon of small droplets suspended in air and the horizontal visibility  $< 1\text{km}$

Moderate Fog: When the visibility between 500-200 metres

Dense Fog: when the visibility between 50- 200 metres

Very Dense Fog: when the visibility  $< 50$  metres

#### Thunderstorm

Sudden electrical discharges manifested by a flash of light (Lightning) and a sharp rumbling sound (thunder)

#### Dust/Sand Storm

An ensemble of particles of dust or sand energetically lifted to great heights by a strong and turbulent wind.

#### Frost

Ice deposits on ground

Air temperature  $\leq 4^{\circ}\text{C}$  ( over Plains)

#### Squall

A strong wind that rises suddenly, lasts for atleast 1 minute.

Moderate: Wind speed 52-61 kmph

Severe: Wind speed 62-67 kmph

Very Severe: Wind speed  $> 67$  kmph

#### Sea State

Effect of various waves in the sea over specific area

Rough to very rough: Wind speed 41-62 kmph (22-33 knots) & Wave height 2.5-6 metre

High to very high: Wind speed 63-117 kmph ( 34-63 knots) & Wave height 6-14 metre

Phenomenal: Wind speed  $> 117$  kmph ( $> 63$  knots) & Wave height  $> 14$  metre

#### Cyclone

Cyclonic Storm: Wind speed 62-87 kmph (34-47 knots)

Severe Cyclonic Storm: Wind speed 88-117 kmph (48-63 knots)

Very Severe Cyclonic Storm: Wind speed 118-165 kmph (64 - 89 knots)

Extremely Severe Cyclonic Storm: Wind speed 166-220 kmph (90 -119 knots)

Super Cyclone Storm: Wind speed  $> 220$  kmph ( $> 119$  knots)

\* Red colour warning does not mean "Red Alert", Red colour warning means "Take Action".

Forecast and Warning for any day is valid from 0830 hours IST of day till 0830 hours IST of next day.

For more details, kindly visit <https://mausam.imd.gov.in> or contact: 011-2434-4599

(Service to the Nation since 1875)

**Hot and Humid:** When maximum temperatures remain  $3^{\circ}\text{C}$  above normal along with the above normal relative humidity.